

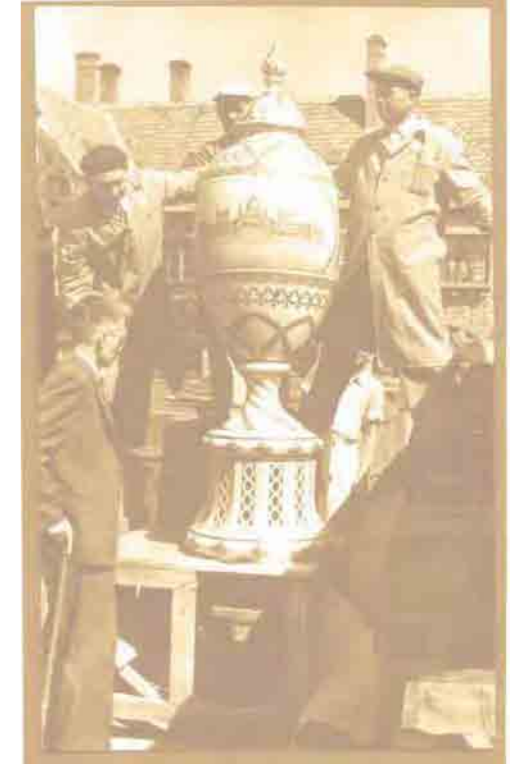
WWW.HEREND.COM



MASTERPIECES



MASTERPIECES



There is nothing a porcelain manufactory could be prouder of than its extraordinary valuable masterpieces. These creations are the reason behind Herend's world prominence from its foundation right up to today. The prizes won at the World Exhibitions of 1851 in London – the first ever of its kind – and of 1855 in Paris opened this imposingly long line of recognition. The success hasn't remained unnoticed. Since that time several royal and aristocratic families have been amongst the buyers and collectors of the creations of Herend. To meet their high expectations is not only a challenge but also the lifeline of this true manufactory, where painting and working of the wheel is still done by hand. In this catalogue we provide you a small sample of our most special pieces in form and pattern from Herend's 180-year history.

Semmi nincs, amire egy porcelánmanufaktúra büszkébb lehet, mint különleges, nagy értékű mesterdarabjaira. Ezeknek az alkotásoknak köszönheti Herend a világ figyelmét alapításától napjainkig. 1851-ben az első londoni, majd az 1855-ös párizsi világkiállítás díjai nyitották az elismerések imponálóan hosszú sorát. A siker nem maradt észrevétlen, azóta is számos uralkodó, arisztokrata család tartozik a herendi alkotások vásárlói, gyűjtői közé. Magas elvárásaiknak megfelelni nem csak próbatétel, de éltető eleme is egy igazi manufaktúrának, ahol a mesterművek festése, korongozása ma is kézi munkával történik. Katalógusunkkal egy kis ízelítőt szeretnénk nyújtani Herend több mint 180 éves története során felhalmozott forma- és mintaválasztékának legkülönlegesebb darabjaiból.



Non c'è niente di cui una manifattura possa essere più fiera che i propri eccezionali capolavori di grande valore. È proprio a queste opere che Herend deve l'attenzione del mondo dalla sua fondazione fino ai nostri giorni. L'imponente e lunga serie di riconoscimenti è stata aperta dai premi della prima esposizione mondiale di Londra nel 1851, seguiti da quelli dell'edizione a Parigi del 1855. Il successo non è rimasto inosservato, oggi come allora diversi regnanti e numerose famiglie di aristocratici appartengono ai clienti, ai collezionisti delle opere di Herend. Soddisfare le loro esigenze raffinate non costituisce solo una prova, ma è elemento vitale di una vera manifattura in cui anche oggi i capolavori vengono dipinti e creati a mano. Con il nostro catalogo desideriamo offrire un assaggio dei pezzi più particolari per quanto riguarda la scelta delle forme e dei motivi accumulatisi nel corso della storia di Herend di oltre 180 anni.

Es gibt nichts, auf das eine Porzellanmanufaktur stolzer sein kann, als auf ihre besonderen, hochwertigen Meisterstücke. Diesen Kreationen verdankt Herend die Aufmerksamkeit der Welt, von der Gründung bis in unsere Tage. Die Preise der ersten Weltausstellung 1851 in London, sowie der Weltausstellung 1855 in Paris eröffneten die imponierend lange Reihe der Anerkennungen. Der Erfolg blieb nicht unbemerkt, seitdem gehören zahlreiche Herrscher- und Aristokratenfamilien zu den Käufern und Sammlern von Herend Kreationen. Den hohen Erwartungen zu entsprechen ist nicht nur eine Herausforderung, sondern auch ein lebensnotwendiges Element einer echten Manufaktur, in der die Bemalung und die Formung auch heute in Handarbeit erfolgt. Mit unserem Katalog möchten wir eine kleine Kostprobe aus den allerbesonderen Stücken der in der über 180 jährigen Geschichte von Herend angehäuften Formen- und Musterauswahl geben.



Не может быть для фарфоровой мануфактуры предмета, более достойного гордости, чем уникальные, бесценные шедевры собственного производства. Искусные творения местных мастеров привлекали внимание мира к Херенду с момента его основания до наших дней. Впервые херендский фарфор был отмечен призом на лондонской Всемирной выставке в 1851 г., затем – на парижской в 1855 г., и далее последовало триумфальное шествие на пути завоевания мирового признания. Успех не остался незамеченным: с тех пор немало монархов, и аристократических семей стали покупателями, коллекционерами херендских шедевров. Соответствовать их высоким требованиям – это не только испытание, но и живительный элемент для настоящей мануфактуры, где гончарные работы и нанесение орнамента до сих пор выполняются вручную. В настоящем каталоге мы постарались представить вам краткий обзор уникальных форм и орнаментов, накопленных за 180-летнюю историю Херенда.



5

VASES



43

WALL PLATES AND
DISHES



55

ORNAMENTS



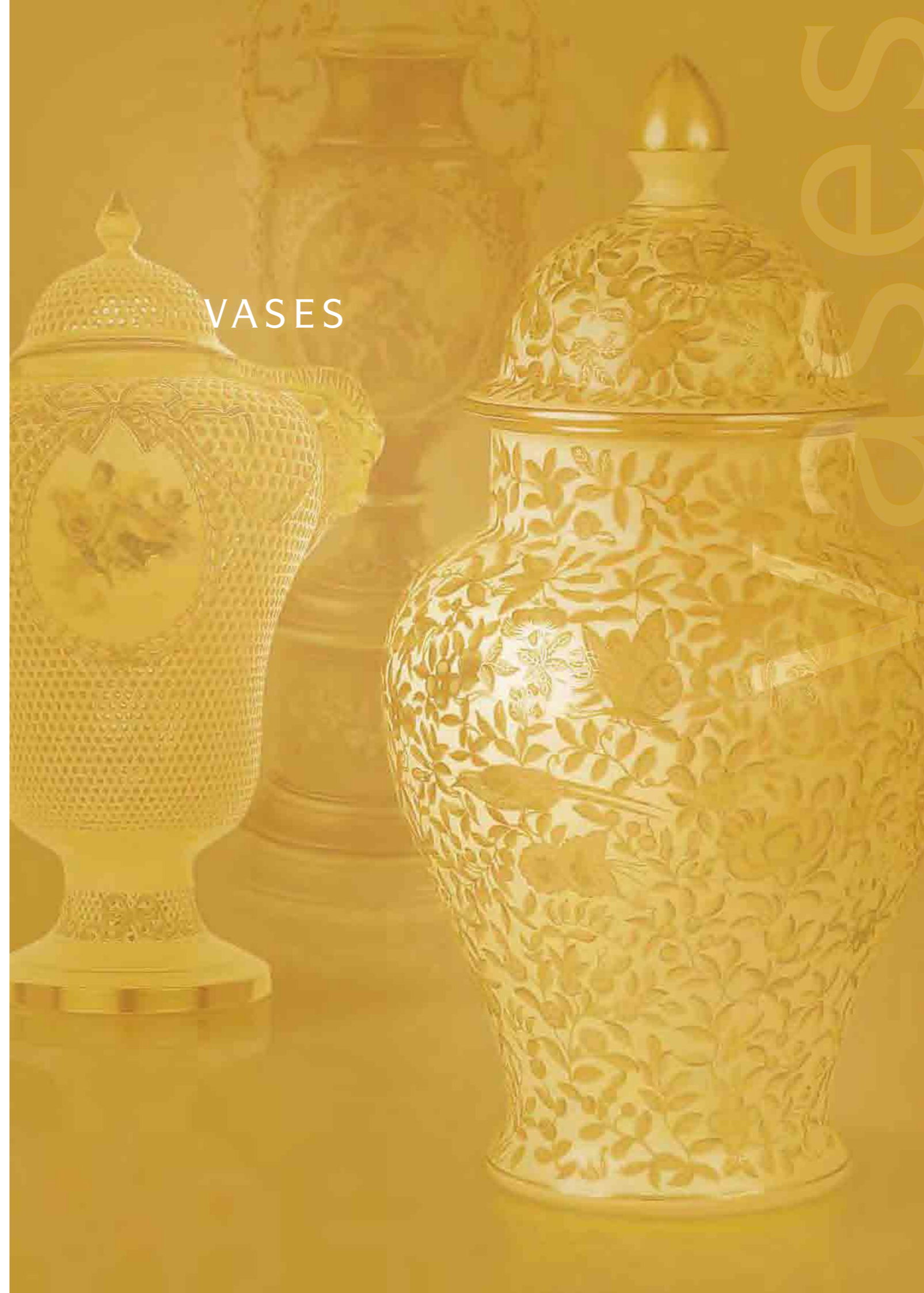
73

FIGURINES



87

TABLEWARE



VASES



06575-0-15 SP140

H: 1155 mm L: 485 mm W: 485 mm

1.
**BIRDS OF PARADISE
 (BLUE)
 OCTAGONAL VASE**

flaunts the characteristic features of Art Nouveau. Each of its four fields features a brilliantly coloured bird of paradise with colourful tail feathers, sitting on a branch of a dried out, leafless tree. Behind it, the contours of the trees fade in the dusk. Under each bird, slender orchids of snow white and red petals reach upward



06575-0-15 SP139

H: 1155 mm L: 485 mm W: 485 mm

2.
**BIRDS OF PARADISE
 (GREEN)
 OCTAGONAL VASE**

with a moss green foundation was made in the Art Nouveau style. In each of its four sides a bird of paradise with colourful tail feathers is portrayed amongst lianas, leaves and orchids. The remaining four sides are encircled by Art Nouveau style ornamental vegetation



06576-0-15 BABUR-II

H: 650 mm L: 250 mm W: 250 mm
Limited to 50 pcs.

3.

**BABUR-II
OCTAGONAL VASE**

The jewel-like luster of the bright yellow and black frilled octagonal ornamental vase conjures up the wealth and splendour of the Orient. It was inspired by a collection of miniatures dating back to the 16th century illustrating the life of Babur, the Great Mogul of India. Copies of the miniatures are depicted on porcelain in its four main sections. In between them and at the bottom section of the vase there are fields decorated with stylized plants, leaves and lianas



06576-0-15 KAGOSH.II

H: 650 mm L: 250 mm W: 250 mm
Limited to 50 pcs.

4.

**KAGOSHIMA-II
OCTAGONAL VASE**

This octagonal, particularly decorative ornamental vase was made in Chinese style. A continuous pattern of four traditional Chinese landscapes depicting birds and plants alternating with ornamental fields covers the entire vase. The fields of dark green foundation are filled with a splendid brocade pattern consisting of stylized flowers and gilded plant foliage winding into a spiral. The scenes and the decorations were painted with exquisitely fine brush strokes and extraordinary care



06662-0-00 HERAKLES

H: 630 mm L: 230 mm W: 230 mm

5.

**HERACLES
VASE**

The original version of this Rococo ornamental vase on a base, made in Herend around 1885, is kept in the Museum of Applied Arts. Its front panel features a copy of the painting by François Lemoyne entitled *Hercule et Omphale* in an oval frame painted with masterful perfection



06576-0-15 SP146

H: 650 mm L: 250 mm W: 250 mm
Limited to 25 pcs.

6.

**LES VENDANGES (PINK)
OCTAGONAL VASE**

The limited edition of 25 copies employed motifs taken from tapestries of the 16th century, to be found in the Cluny Museum. Lilies, roses, morning glories, a unicorn, a blackcock, a donkey, a horse, a pheasant and a dog are hidden on the golden knobbed dome-shaped lid of the vase. The short neck of the vase is interlaced with plants, whereas the body is populated by harvesting figures from the tapestry of the Middle Ages



7.
CHINESE
ARISTOCRATS
VASE

The original version of the small ornamental vase with a lid glittering as a jewel was made in 1856, and today it is kept in the Museum of Applied Arts. The gilded handle of the richly coloured lid of the vase is shaped like a Lion of Fo. Underneath it, fighting green- and red-scaled dragons appear amongst turquoise and green clouds; the back and the front panels have two larger paintings each representing the life of Chinese aristocracy

06580-0-27 SP138

H: 305 mm L: 130 mm W: 130 mm



8.
PEARLS OF THE
SACRED PAST
VASE

The front panel of the slender, empire limited edition vase features a copy of the painting entitled "Of the Pearls of the Sacred Past" by Károly Markó Sr. on porcelain, made in 1833. The oval medallions are encircled by an engraved golden garland, and the handles of the vase are graceful swan necks

06668-0-05 SP145

H: 430 mm L: 190 mm W: 160 mm
 Limited to 50 pcs.



9.
**SAMARKAND
 LARGE OCTAGONAL
 VASE**

Large ornamental vase with geometrical patterns characteristic of Central Asian Islam art has been made in the Herend Manufactory since 1999

06576-0-15 SP186

H: 650 mm L: 250 mm W: 250 mm



10.
**HARBOUR
 LANDSCAPE
 VASE**

This sizeable ornamental vase decorated with a harbour landscape and sailboats encircling the vase, painted in naïve style

06667-0-23 SP1053

H: 530 mm L: 245 mm W: 230 mm
 Limited to 25 pcs.



11.
KYOTO
VASE

With trellis and plant under-painting on a gold ground and Japonaiserie genre pictures in the reserves. The knob on the cover is modelled as a Lion of Fo

06571-0-27 KYOTO

H: 590 mm L: 335 mm W: 335 mm
Limited to 50 pcs.

12.
IMARI
VASE

Imari-style ornamental vase. It is encircled by a pattern sinking in cobalt blue glaze, and outlined by a golden pen drawing. Among them turquoise green leaves, red chrysanthemums, peonies and enamel painted phoenix birds are featured



06676-0-00 SP481

H: 400 mm L: 240 mm W: 240 mm



13.-14.

**LADY WITH UNICORN
VASES**

The décor of the vases of Herend, evocative of the form of the ancient amphorae, was inspired by the 15th century tapestry of unmatched beauty entitled "Lady with Unicorn" kept in the Cluny Museum in Paris. On the picture a sweet faced, splendidly dressed blond lady is standing and picking out jewelry from a box held by her maid. The key to understanding this picture is the figure of the unicorn, so in this way the mesmerizing tapestry was probably made as a beautiful pledge of love

06490-0-23 SP203

H: 495 mm L: 295 mm W: 190 mm



06684-0-00 SP150

H: 470 mm L: 245 mm W: 185 mm



15.
ISPAHAN
VASE

This covered ornamental bolster vase was named after the town of Ispahan – one of the most important centers of Persian carpet weaving since the 16th century. The design comprising a flower bud shaped knob, a narrow rimmed, dome-shaped lid, a short neck and a stocky body were inspired by the motifs of Persian rugs. The colour composition of black, gold and red of this fancy vase composed with such exquisite sense is a perfect reflection of the magical atmosphere of oriental rugs. In turn, its design, rich in detail magnificently conjures up the world of an exotic, colourful culture

06571-0-15 ISPAHAN

H: 590 mm L: 335 mm W: 335 mm
Limited to 50 pcs.



16.
IMPERIAL PHOENIX
VASE

The original version of this large bolster vase was made around 1876. In the midsection of the vase, a phoenix bird sits on a whimsically shaped brown rock resplendent in golden yellow and green feathers. His tail feathers, beak and feet glimmer in crimson. His plain, brown-feathered mate sits next to him on a low, hollow rock

06571-0-15 IMPERIAL

H: 590 mm L: 335 mm W: 335 mm
Limited to 50 pcs.



17.
SPRING BLOSSOMS
VASE

This vase, decorated with blossoming branches, birds and butterflies is a renewed version of an old piece made in Herend

06571-0-15 SP839

H: 590 mm L: 335 mm W: 335 mm
 Limited to 50 pcs.



18.
VENUS IN HEAVENS
VASE

The lid, body and base of the vase made around 1890 features a lace-like, reticulated wall. The painting in the medallion portrays Venus lounging on draperies atop clouds

06726-0-15 SP113

H: 525 mm L: 340 mm W: 270 mm

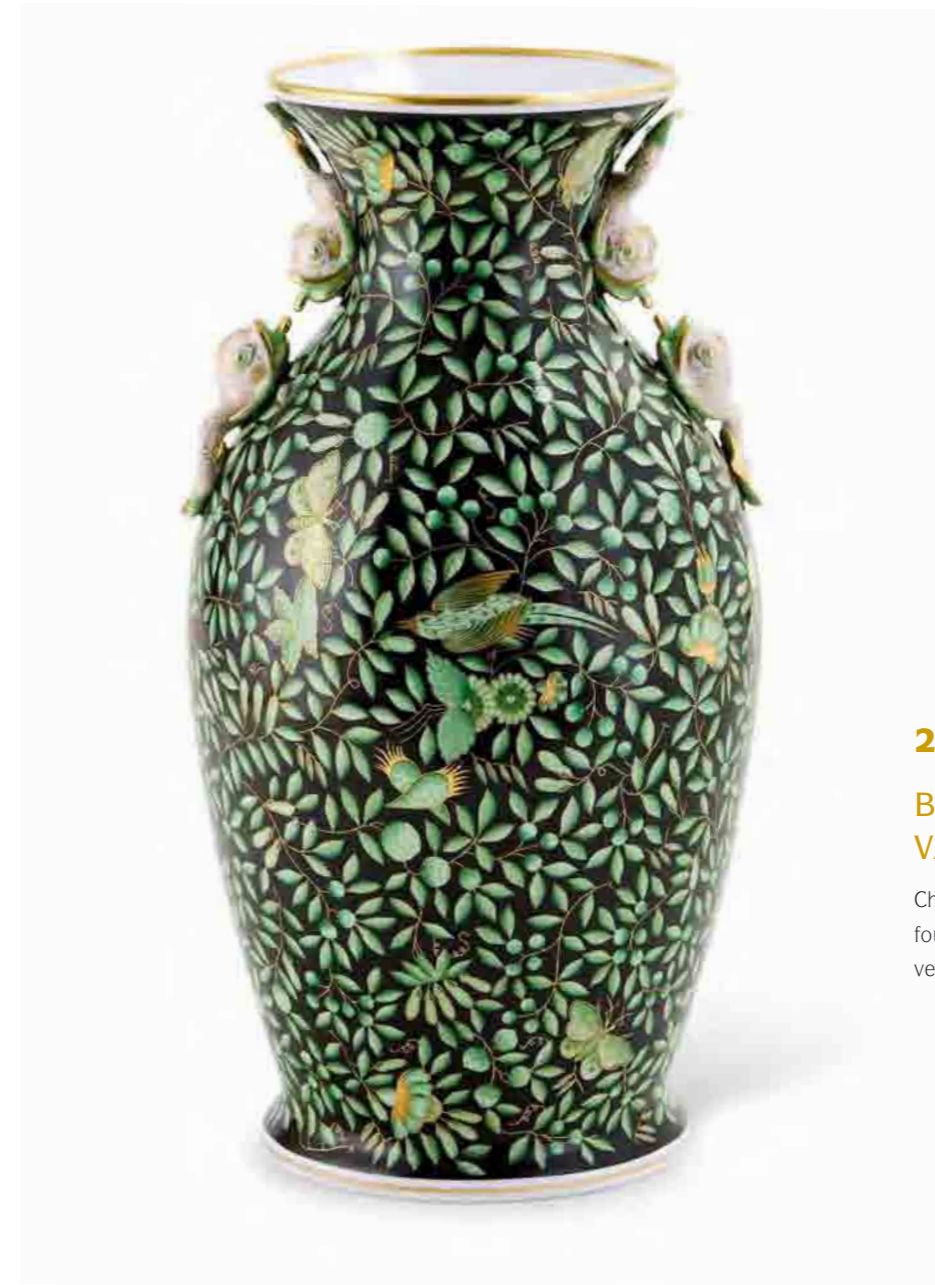


19.
SIANG JAUNE
VASE

Richly painted Japanese style blue, green and purple logs and flowers are featured in front of a yellow background

06571-0-15 SJ

H: 590 mm L: 335 mm W: 335 mm



20.
BOTANICAL GARDEN
VASE

Chinese style vase on a black foundation with Jardin zoologique vert à fond noir (ZOVA) décor

06675-0-00 ZOVA-FN

H: 470 mm L: 260 mm W: 260 mm



21.

**CALLA BOUQUET
VASE**

Art Nouveau-style vase. Realistically painted slender flowers embossed in a relief-like way, emerge from the red foundation of the body

07153-0-00 SP90

H: 590 mm L: 335 mm W: 335 mm



22.

**TULIP BOUQUET
VASE**

One of the most recent pieces of the Herend Manufactory

06516-0-00 CD

H: 475 mm L: 290 mm W: 285 mm

23.- 24.

**GOLDEN
BOTANICAL GARDEN
VASES**

A fully painted surface with various birds,
butterflies and flowers in brick red



06576-0-15 ZO

H: 650 mm L: 250 mm W: 250 mm



06572-0-15 ZO

H: 370 mm L: 170 mm W: 170 mm

25.

KANGSHI
VASE

Chinese style vase with dolphin
handles; in a fresh light green
background featuring trees in
bloom and birds



06675-0-00 KANGSHI

H: 470 mm L: 260 mm W: 260 mm

VASES

26.

IMPERIAL PEONIES
VASE

Against a black background stylized
green peonies fill the surface of the
Chinese style vase decorated with
lianas, leaves and dots



07177-0-00 PVI

H: 210 mm L: 115 mm W: 135 mm
Limited to 50 pcs.

27. - 28.

**POISSON
VASES**

The PO-RI décor was born as a richly executed revival of a museum piece. Ornamental carps, sedges and foliated scrolls representing wealth are popular elements of Chinese porcelain decoration



06576-0-15 PO-RI

H: 650 mm L: 250 mm W: 250 mm



06675-0-00 PO-RI

H: 470 mm L: 260 mm W: 260 mm



29.
**QUEEN VICTORIA
 VASE**

Designed for the 175th anniversary of the foundation of the Manufactory. The sides of the so called 'dragon vase' are decorated with the perhaps the best known design: the rich version of the motif named after Queen Victoria.

06487-0-19 VICTORIA
 H: 570 mm L: 325 mm W: 305 mm



30.
**BUTTERFLY GARDEN
 VASE**

This is a Chinese style ornamental vase with butterflies, roses, birds and scattered flower motifs

06571-0-15 SP225
 H: 590 mm L: 335 mm W: 335 mm



07135-0-17 SP395

H: 305 mm L: 120 mm W: 120 mm
Limited to 250 pcs.

31.- 32.

**QUEEN VICTORIA
VASES**

The special feature of these vases is the relief-like, embossed décor with peonies and butterflies similar to the Victoria motif



07141-0-00 SP395

H: 280 mm L: 155 mm W: 155 mm
Limited to 250 pcs.

33.-34.

**ART DECO FLOWERS
VASES**

Art Deco style vases with tulips and carnations. These vases were created as a revival of a museum piece



07007-0-00 SP837

H: 380 mm L: 240 mm W: 240 mm
Limited to 100 pcs.



07120-0-00 SP837

H: 295 mm L: 240 mm W: 240 mm
Limited to 100 pcs.

35.

LACE-GARDEN
VASE

The busy stylized ornamental vase decorated by black and golden tulips is one of the most recent pieces of the Manufactory. The motifs are evocative of the dazzling technique of Brussels lace



07006-0-00 NCSTUL

H: 180 mm L: 320 mm W: 320 mm

36.

HIBISCUS FANTASY
VASE

An ornamental vase decorated with black and golden hibiscuses and butterflies, made in 2007



07007-0-00 MXHIB

H: 380 mm L: 240 mm W: 240 mm



37.

**GARDEN OF EDEN
VASE**

The vegetation covering the surface in a liana-like way appears dark green on the top and gradually gets lighter towards the bottom

06576-0-15 SP221

H: 650 mm L: 250 mm W: 250 mm

WALL PLATES
AND DISHES

38.

SAMARKAND
WALL PLATE

This octagonal, reticulated wall plate of imposing size and haunting beauty has been made in the Herend Manufactory since 1999. Painted in Oriental style



08393-0-50 SP335

H: 85 mm L: 460 mm W: 460 mm

39.

FRUITS OF AUTUMN
WALL PLATE

An ornamental bowl painted in a naturalistic style with gilded, reticulated rim. The flowers, fruits and mushrooms rise up from the brown background as brilliant splashes of colour



08401-0-50 SP292

H: 65 mm D: 400 mm

40.

CUTTY SARK
WALL PLATE

This ornamental wall plate more than 50 centimeters in diameter and painted with exquisite detail commemorates the famous tea clipper



08400-0-50 CUTTY_SARK

H: 95 mm D: 520 mm
Limited to 50 pcs.

41.

TITANIA
WALL PLATE

The ornamental bowl immortalizing the memory of the narrow tea clipper with three masts has been rendered in the "palette" painting style representing the highest level of porcelain painting



08401-0-50 SP351

H: 65 mm D: 400 mm

42.- 43.

**AQUATIC PARADISE
WALL PLATES**

The original version of these masterpieces was made around 1880 in Herend. The surface of the plate is decorated with a Chinese style painting depicting waterfowl and plants. The idyllic scene is

framed by gigantic lotuses with stems reaching into the sky, green leaves, yellow and golden flowers. The painted bustling water world carries a symbolic meaning since cranes are the symbols of longevity in Chinese mythology and art, while the beautiful lotuses growing out of the mud and mire are symbols of purity and perfection



07499-0-00 OISEAUX-II

H: 75 mm D: 355 mm

The original version of this ornamental plate of more than half a meter in diameter is kept by the Manufactory museum. The exquisite, fine work of the Rococo-style rim ornament encircles a landscape depicting a lake painted in

Chinese style. The burning red, the dark yellow, the shiny silver and the turquoise are united in splendid harmony in this beautiful painting – an artistic symbol of peace and heavenly bliss; the desired Garden of Eden



08400-0-50 OISEAUX-II

H: 95 mm D: 520 mm
Limited to 50 pcs.



03232-0-00 SP1050

H: 75 mm D: 160 mm Vol: 1920 ml

44.

GOLDEN ROCOCO BOWL

TYPE Painted in underglaze cobalt and gold to French Rococo taste. The creation of this extraordinary double walled bowl requires a high level of skills

46.

ROSE GARLAND WALL PLATE

This large ornamental plate is a marvelous symbol of the richness of nature and lush blooming. The diameter of this bowl is almost 40 centimeters and is encircled by a wide, reticulated rim



08401-0-50 SP390

H: 65 mm D: 400 mm

45.

IMARI BOWL

The entire bowl is encompassed by a busy Imari style décor including peonies, phoenix birds and in the middle of the bowl in a gilded framed medallion a golden colour, spotted Lion of Fo looking at his own tail. Its painting is extraordinary, sinking in the glaze cobalt blue, above it red and golden colours



02325-0-00 SP256

H: 100 mm D: 285 mm Vol: 3500 ml

47.

PHOENIX
ORNAMENTAL PLATE

with a stylized picture of a bird
amidst peonies and bamboo branches



07499-0-00 SP840

H: 75 mm D: 355 mm
Limited to 100 pcs.

48.

QUEEN VICTORIA
ORNAMENTAL PLATE

This gigantic ornamental plate is decorated
with perhaps the best-known pattern of the
Manufactory with richly painted Chinese inspired
peonies, branches and butterflies. This plate of
extraordinary size and lace-like reticulated walls
was made in 1861 by Mór Fischer



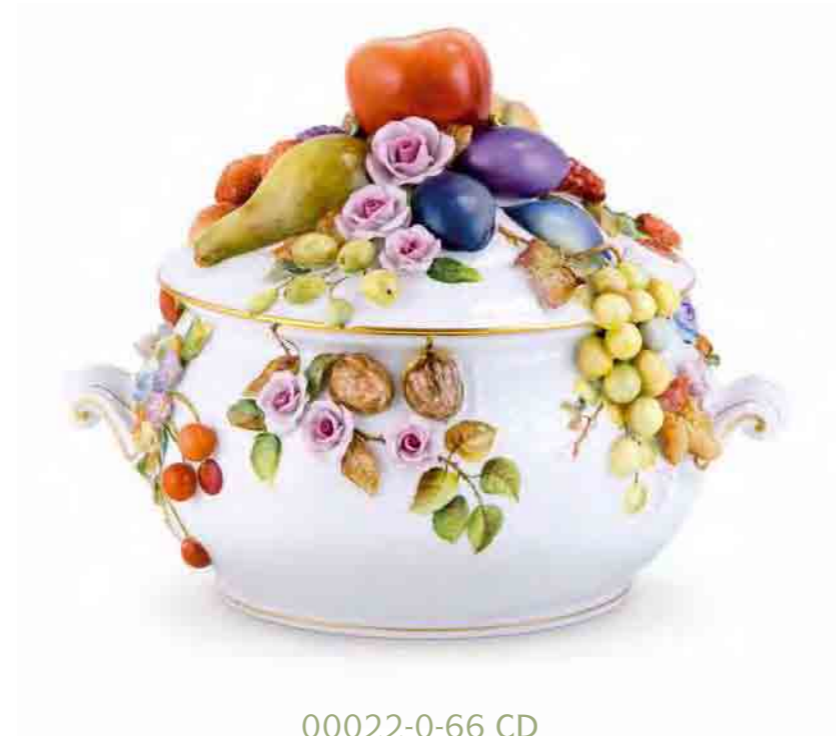
07496-0-00 VICTORIA

H: 140 mm D: 890 mm

49.-50.

**ABUNDANCE OF NATURE
BOWL**

The realistically painted fruit plastically rise
up from the form in a relief-like way



00022-0-66 CD

H: 240 mm L: 295 mm W: 245 mm Vol: 4200 ml



00086-0-66 CD

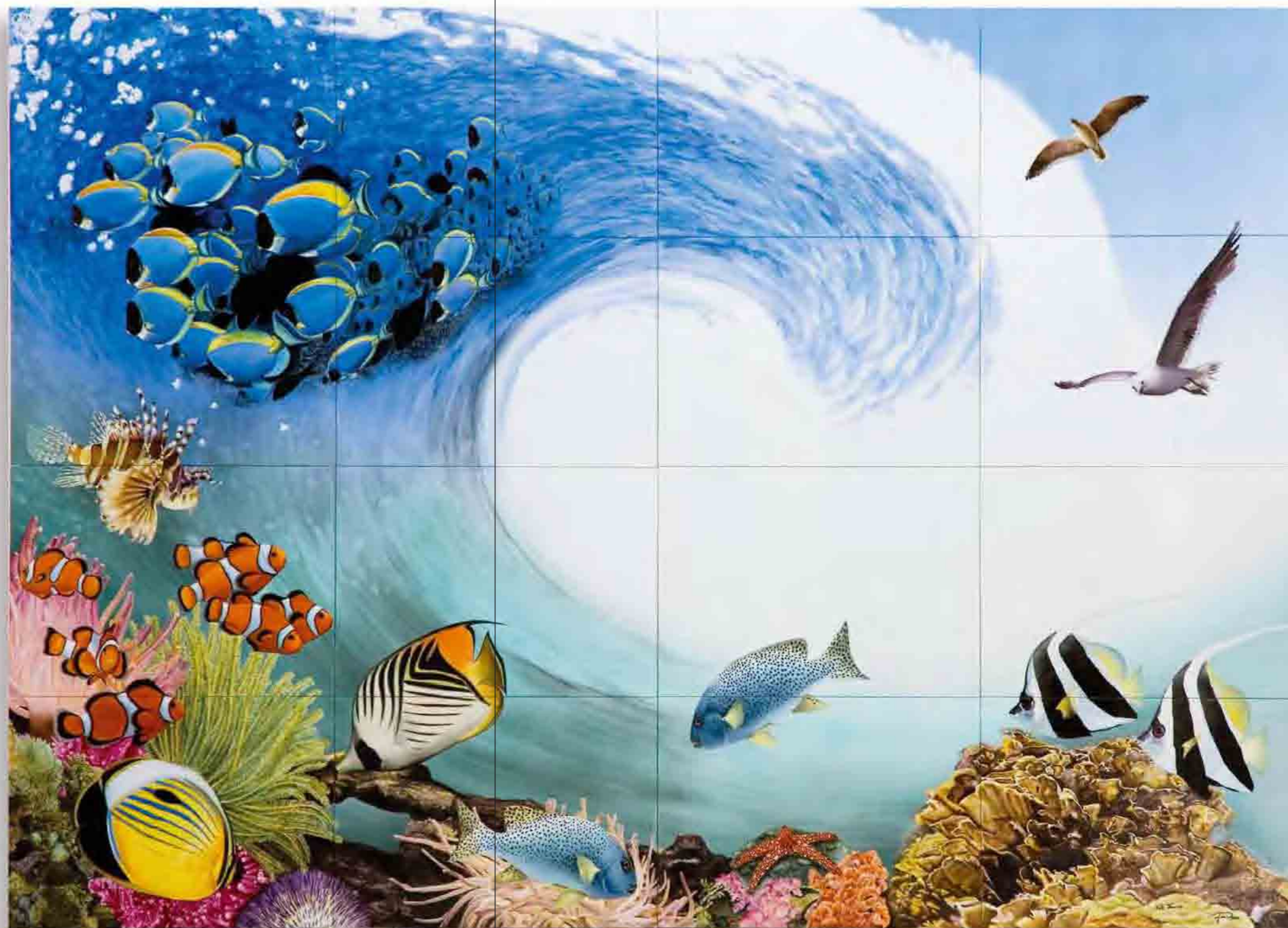
H: 135 mm L: 300 mm W: 240 mm Vol: 2000 ml

ORNAMENTS

51.

**MARINE LIFE
WALL ORNAMENT**

conjuring up images of marine life.
This more than two-meter wide piece,
consisting of 16 plates is one
of the brand new pieces of 2008



08123-0-91 SP2008-MER

H: 7 mm L: 2360 mm W: 1560 mm

52.

HEREND ROYAL BUTTERFLY

The jewelled egg's white surface is decorated with the Victoria pattern, the upper part is made of 18 carat gold. The gold band crossing the top and bottom of the egg is decorated with one hundred diamonds; pressing the drop-shaped ruby clasp will open the egg and display the Herend Royal Butterfly. The spread wings are made of Herend porcelain, while the body and the wing settings are of white gold. The lavish pendant boasts 40 sparkling diamonds



06060-0-17 VICTORIA

H: 125 mm L: 110 mm W: 110 mm
Limited to 15 pcs.

53.

WATTEAU SCENE JARDINIERE

One side of the densely gilded Rococo style flowerpot features a Watteau scene; the other is a fruit and flower composition



07651-0-00 SP337

H: 155 mm L: 350 mm W: 160 mm

54.

THE HOLY CROWN OF HUNGARY (REPRODUCTION)

The lower diadem, the intersecting bands, the inset precious stones and the pictures representing the saints are all made of Herend porcelain. In order to be able to make this piece all the skills and experience accumulated in the past 180 years in Herend were necessary



06833-0-00 SP733

H: 195 mm L: 235 mm W: 230 mm

55.

GENERAL KLAPKA'S SWORD (REPRODUCTION)

A porcelain reproduction of the sword of General György Klapka, which he used in the 1848-9 war of independence



06834-0-00 SP729

H: 35 mm L: 850 mm W: 140 mm

56.

JEAN BAPTISTE DRESCHER: RICH
STILL LIFE WITH FLOWERS (REPRODUCTION)
PORCELAIN TABLEAU

The model for this extremely busy Herend porcelain tableau was a magnificent Dutch painting. In addition to displaying technical virtuosity, this porcelain picture is true to the

real goal of creating the original baroque painting; i.e., the real reason behind creating this opus was not to depict nature, but to express mortality present in every moment of life by way of art



08101-0-00 SP514

H: 5 mm L: 300 mm W: 400 mm
Limited to 25 pcs.

57.

STILL LIFE
WITH HEREND FRUIT STAND
PORCELAIN TABLEAU

Composition with glass goblet painted in the style of the paintings of the Low Countries. An interesting feature of the painting is the Herend porcelain fruit stand in the background



08109-0-00 SP541

H: 5 mm L: 300 mm W: 200 mm

58.

**MURILLO: BOYS EATING MELONS
AND GRAPES (REPRODUCTION)
PORCELAIN TABLEAU**

This tableau is a copy of one of Murillo's most popular paintings on porcelain. The coloration of the painting and the portrayal of the snacking beggar kids is worthy of the masterpiece – a symbol of the Spanish Baroque



08109-0-00 SP540

H: 5 mm L: 300 mm W: 200 mm

59.

**WINTER LANDSCAPE
NEAR HEREND
PORCELAIN TABLEAU**

employing a similar brush control technique to oil painting is pushing the envelope of the technique. The painting that depicts a winter forest truly represents the technical skills of the master painters of the Manufactory



08101-0-00 SP566

H: 5 mm L: 300 mm W: 400 mm

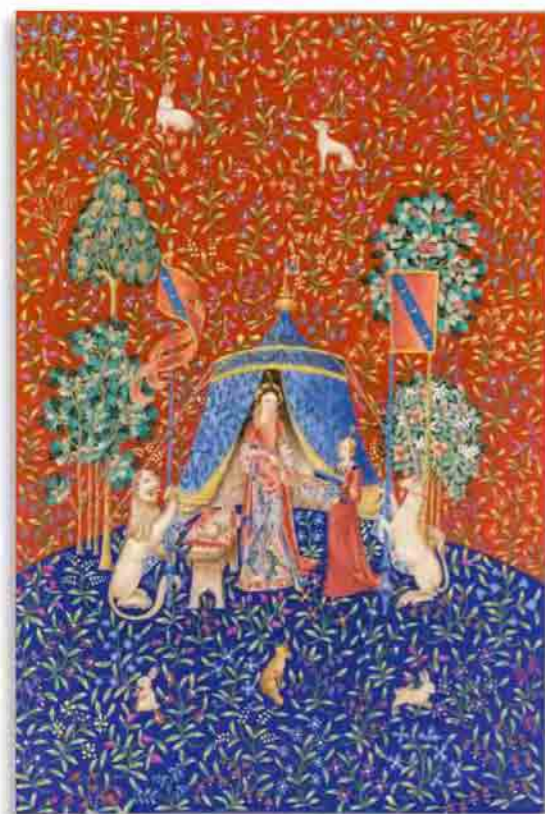


60.
CARPENTER
PORCELAIN TABLEAU

A Flemish genre-painting on a porcelain plate. The picture – portraying a carpenter, a spinner and child picking up shavings – is made with “palette” technique

08112-0-00 SP626

H: 5 mm L: 200 mm W: 150 mm



61.
LADY WITH UNICORN
PORCELAIN TABLEAU

The décor of the Herend porcelain picture slate was inspired by the 15th century tapestry of unmatched beauty entitled “Lady with Unicorn” kept in the Cluny Museum in Paris. In the picture, a sweet faced, splendidly dressed blond lady is standing and picking out jewelry from a box held by her maid. The key to understanding this picture is the figure of the unicorn. So, in this way the mesmerizing tapestry was probably made as a beautiful pledge of love

08109-0-00 SP150

H: 5 mm L: 300 mm W: 200 mm

62.
STILL LIFE WITH ORANGE
PORCELAIN TABLEAU

Fruit composition with glass goblet, wild flowers painted in naturalistic style



08109-0-00 SP677

H: 5 mm L: 300 mm W: 200 mm

63.

JIANGXI
ORNAMENTAL DISH

This specially shaped porcelain masterpiece is a revival of a piece from the collection of the Herend Museum of Porcelain Art.

The red, blue and brick red stripes of the pattern inspired by the Far East are covered in tiny, enamel painted flowers



07592-0-00 JIANGXI

H: 345 mm L: 305 mm W: 120 mm

64.

TUNHUANG
TEA CADDY

with Far Eastern-style décor.
The boxes with lids sitting on a framed tray are decorated with brick red and golden paint



06370-0-21 TUNG

H: 170 mm L: 225 mm W: 225 mm

65.- 66.

SIANG NOIRE
ORNAMENTAL DISH AND JUG

This specially shaped set has been made in the Herend Porcelain Manufactory since 1840. The black and white stripes of the SN pattern inspired by the Far East are covered with tiny enamel painted flowers; the handle of the jug has the shape of a turquoise green lizard hanging onto a branch



07591-0-00 SN

H: 105 mm L: 415 mm W: 380 mm



07595-0-00 SN

H: 330 mm L: 300 mm W: 120 mm

67.

BOUQUET DE HEREND
FRUIT BASKET

Baroque style, reticulated
basket with classical, saxonian-style
Bouquet de Herend décor



07436-0-00 BHR

H: 170 mm L: 420 mm W: 310 mm

FIGURINES



68.
ALPHABET
CARNIVAL FIGURINE

On the cloak of this woman figure holding a purple punch of flowers near 200 different print and cursive characters of the latin alphabet can be seen

15033-0-00 ABC

H: 1025 mm L: 280 mm W: 300 mm
Limited to 10 pcs.

69.
NOBLE LADY
CARNIVAL FIGURINE

A purple variant of the Jardin Zoologique pattern can be seen on this sizeable porcelain figure. Designed by the hungarian designer Imre Schrammel



15031-0-00 ZOPVT

H: 895 mm L: 295 mm W: 280 mm
Limited to 10 pcs.



15002-0-00 MTFC

H: 360 mm L: 180 mm W: 120 mm
Limited to 100 pcs.



15002-0-00 ZOVA-FN

H: 360 mm L: 180 mm W: 120 mm
Limited to 100 pcs.

70.-71.**VENETIAN CLOWNS
CARNIVAL FIGURINES**

This porcelain sculpture based on the design by Imre Schrammel featuring the characteristic figure of the Venice Carnival is decorated with the motifs of the Herend Manufactory.

The figure on the left is decorated with the "Mosaiques Triangulaires et Fleurs des Champs" (MTFC), and the figure on the right is decorated with the "Jardin Zoologique Vert à Fond Noir" (ZOVA-FN) patterns



15004-0-00 SJ

H: 400 mm L: 285 mm W: 180 mm
Limited to 100 pcs.

72.-73.**VENETIAN COUPLE
CARNIVAL FIGURINES**

These porcelain figurines designed by Imre Schrammel and conjuring up images of the characteristic masquerades of the Venice Carnival are decorated with the chinoiserie-style "Siang jaune" (SJ) pattern.



15011-0-00 SJ

H: 430 mm L: 150 mm W: 220 mm
Limited to 100 pcs.

74.

**HUNGARIAN HORSEHERD
FIGURINE**

An expressive late 19th-century statue, now in the courtyard of the Royal Palace of Buda Castle, served as the inspiration for this Herend figure



05888-0-00 C

H: 440 mm L: 500 mm W: 270 mm

75.-76.

**MOORISH COUPLE
LAMPS**

Costumed figurines with lampshade made in the 1930's



05766-9-00 C1

H: 390 mm L: 168 mm W: 188 mm



05767-9-00 C1

H: 395 mm L: 172 mm W: 210 mm

77.-78.-79. 80.-81.-82.

ORIENTAL FIGURINES

It was inspired by a collection of miniatures dating back to the 16th century illustrating the life of Babur, the Great Mogul of India, the colourful characters of which have now come to life in the hands of Herend sculptors. The series depicts the members of the Indian ruler's court: The prince and princess are surrounded by servants, dancers and musicians



15412-0-00 CD

H: 125 mm L: 65 mm W: 90 mm



15405-0-00 CD

H: 145 mm L: 82 mm W: 60 mm



15404-0-00 CD

H: 130 mm L: 83 mm W: 88 mm



15416-0-00 CD

H: 125 mm L: 80 mm W: 105 mm



15410-0-00 CD

75 mm L: 35 mm W: 52 mm



15407-0-00 CD

H: 127 mm L: 80 mm W: 120 mm

**83.****TIGER**

One of the increasingly popular animal figures painted naturalistically

05209-0-00 MCD

H: 142 mm L: 452 mm W: 155 mm

84.**CHEETAH**

The form and painting are naturalistic in this figure, which perfectly captures the character of the world's fastest land predator



15656-0-00 MCD

H: 150 mm L: 375 mm W: 160 mm

85.

CANADIAN WOOD-DUCKS

The realistically painted colourful birds are made even more plastic by the matte surface of the porcelain



15341-0-00 MCD

H: 200 mm L: 245 mm W: 325 mm



15541-0-00 CD

H: 746 mm L: 549 mm W: 444 mm

86.

TURUL

For Hungarians the 'Turul Bird' (Saker Falcon) exists not only as a motif in the folktale, folk art or in archeology, but it is the main figure of myth, which leads us into the world of totem belief. The ruffled up feathers on the bird's neck signify its readiness to defend the country as the guard of traditions and of the sword of St. Stephen. Herend's Turul Bird figure was designed and sculpted by Kata Gácsér, a ceramic artist in the 1930s. It was revived and made in a much larger size to commemorate the 1100th anniversary of the Statehood of Hungary

TABLEWARE

87.**BALATONFÜRED TETE-A-TETE
(B.FURED)**

The pieces of this cabaret coffee service for two have Baroque-Rococo shapes and bear scenes of Lake Balaton and famous buildings at Balatonfüred and Tihany (Hungary)

**88.****PERSIAN MINIATURES
(MP)**

The pieces of this delicate, exotic service imitate the shapes of Oriental buildings. The sumptuous pattern was inspired by the Persian miniatures of the 16th century. The panels between these shining, brightly coloured miniatures are filled with the supple arabesques typical of Oriental design



89.**CORNUCOPIA
(TCA)**

The birth of Tupini decor in 1870 was inspired by Islamic ceramics glittering in enamel colours. This Eastern-style decor also won the approval of the Persian Shah at the turn of the 19th century

**90.****EGLANTINE
(EGA)**

The sumptuous, Empire-style Eglantine decor, reminiscent of heavy brocades and ornate silks, has been made at Herend since the second half of the 19th century. In the centre of each piece is a gold-framed string of greenish white pearls on a blue ground, circling a meticulously painted spray of pink roses. The border is decorated with exceptional richness



91.**QUATRE SAISONS
(QS)**

The rich, translucent, pastel painting of the intricate 'Four Seasons' décor conjures up the plant life of a flowery meadow. The meticulously executed frieze is fringed by a band of gold and separated from the snow-white well by a dark-green line

**92.****MEDITERRANEAN GARDEN
(JM)**

This décor conjures up the magic of a Mediterranean garden. Perched in the floating festoon of flowers, there are songbirds with bright plumage. This cheerful, airy décor recalls all the romance and lushness of southern lands



93.**JULIA
(JULIA)**

The particularly fine decoration of scales with gilding and scattered flowers follows a pattern painted at the Royal Porcelain Manufactory in Berlin in the 1780s

**87.****BELVEDERE
(BEL)**

The pieces of this cabaret tea service for two are lobed in shape and divided up by gold vertical stripes. An Empire-style set in BEL décor recalls the atmosphere of the first half of the 19th century



95.

MIRAMARE
(MR)

Named after the palace
of Miramare, near Trieste, for which
it was first supplied to Archduke
Maximilian of Habsburg in the 1860s



APPENDIX A

PRODUCT CODE	PAGE NR.	PRODUCT CODE	PAGE NR.
00022-0-66 CD	54	07177-0-00 PVI	31
00086-0-66 CD	54	07436-0-00 BHR	72
02325-0-00 SP256	50	07496-0-00 VICTORIA	53
03232-0-00 SP1050	50	07499-0-00 OISEAUX-II	48
05209-0-00 MCD	84	07499-0-00 SP840	52
05766-9-00 C1	81	07591-0-00 SN	70
05767-9-00 C1	81	07595-0-00 SN	71
05888-0-00 C	80	07592-0-00 JIANGXI	68
06060-0-17 VICTORIA	58	07651-0-00 SP337	59
06370-0-21 TUNG	69	08101-0-00 SP514	62
06487-0-19 VICTORIA	34	08101-0-00 SP566	65
06490-0-23 SP203	18	08109-0-00 SP150	19
06516-0-00 CD	27	08109-0-00 SP540	64
06571-0-15 IMPERIAL	21	08109-0-00 SP541	63
06571-0-15 ISPAHAN	20	08109-0-00 SP677	67
06571-0-15 KYOTO	16	08112-0-00 SP626	66
06571-0-15 SJ	24	08123-0-91 SP2008-MER	56
06571-0-15 SP225	35	08393-0-50 SP335	44
06571-0-15 SP839	22	08400-0-50 CUTTY_SARK	46
06572-0-15 ZO	29	08400-0-50 OISEAUX-II	49
06575-0-15 SP139	7	08401-0-50 SP292	45
06575-0-15 SP140	6	08401-0-50 SP351	47
06576-0-15 BABUR-II	8	08401-0-50 SP390	51
06576-0-15 KAGOSH.II	9	15002-0-00 MTFC	76
06576-0-15 PO-RI	32	15002-0-00 ZOVA-FN	77
06576-0-15 SP146	11	15004-0-00 SJ	78
06576-0-15 SP186	14	15011-0-00 SJ	79
06576-0-15 SP221	42	15031-0-00 ZOPVT	75
06576-0-15 ZO	28	15033-0-00 ABC	74
06580-0-27 SP138	12	15341-0-00 MCD	86
06662-0-00 HERAKLES	10	15404-0-00 CD	82
06667-0-23 SP1053	15	15405-0-00 CD1	82
06668-0-05 SP145	13	15407-0-00 CD	83
06675-0-00 KANGSHI	30	15410-0-00 CD	83
06675-0-00 PO-RI	33	15412-0-00 CD	82
06675-0-00 ZOVA-FN	25	15416-0-00 CD	83
06676-0-00 SP481	17	15541-0-00 CD	86
06684-0-00 SP150	66	15656-0-00 MCD	85
06726-0-15 SP113	23	BALATONFÜRED (B.FURED)	88
06833-0-00 SP733	60	BELVEDERE (BEL)	95
06834-0-00 SP729	61	CORNUCOPIA (TCA)	90
07006-0-00 NCSTUL	40	EGLANTINE (EGA)	91
07007-0-00 MXHIB	41	JULIA (JULIA)	94
07007-0-00 SP837	38	MEDITERRANEAN GARDEN (JM)	93
07120-0-00 SP837	39	MIRAMARE (MR)	96
07135-0-17 SP395	36	PERSIAN MINIATURES (MP)	89
07141-0-00 SP395	37	QUATRE SAISONS (OS)	92
07153-0-00 SP90	26		

APPENDIX B

PRODUCT NAME	PAGE NR.	PRODUCT NAME	PAGE NR.
ABUNDANCE OF NATURE	54	KAGOSHIMA-II	9
ALPHABET	74	KANGSHI	30
AQUATIC PARADISE	48, 49	KYOTO	16
ART DECO FLOWERS	38, 39	LACE-GARDEN	40
BABUR-II	8	LADY WITH UNICORN	18, 19, 66
BALATONFÜRED (B.FURED)	88	LES VENDANGES (PINK)	11
BELVEDERE (BEL)	95	MARINE LIFE	56
BIRDS OF PARADISE (BLUE)	6	MEDITERRANEAN GARDEN (JM)	93
BIRDS OF PARADISE (GREEN)	7	MIRAMARE (MR)	96
BOTANICAL GARDEN	25	MOORISH COUPLE	81
BOUQUET DE HEREND	72	MURILLO: BOYS EATING	
BUTTERFLY GARDEN	35	MELONS AND GRAPES	64
CALLA BOUQUET	26	NOBLE LADY	75
CANADIAN WOOD-DUCKS	86	ORIENTAL FIGURINES	82, 83
CARPENTER 66		PEARLS OF THE SACRED PAST	13
CHEETAH	85	PERSIAN MINIATURES (MP)	89
CHINESE ARISTOCRATS	12	PHOENIX	52
CORNUCOPIA (TCA)	90	POISSON	32, 33
CUTTY SARK	46	QUATRE SAISONS (QS)	92
EGLANTINE (EGA)	91	QUEEN VICTORIA	34, 36, 37, 53
FRUITS OF AUTUMN	45	ROSE GARLAND	51
GARDEN OF EDEN	42	SAMARKAND	14, 44
GENERAL KLAPKA'S SWORD	61	SIANG JAUNE	24, 78, 79
GOLDEN BOTANICAL GARDEN	28, 29	SIANG NOIRE	70, 71
GOLDEN ROCOCO	50	SPRING BLOSSOMS	22
HARBOUR LANDSCAPE	15	STILL LIFE WITH HEREND FRUIT STAND	63
HERACLES	10	STILL LIFE WITH ORANGE	67
HEREND ROYAL BUTTERFLY	58	THE HOLY CROWN OF HUNGARY	60
HIBISCUS FANTASY	41	TIGER	84
HUNGARIAN HORSEHERD	80	TITANIA	47
IMARI	17, 50	TULIP BOUQUET	27
IMPERIAL PEONIES	31	TUNHUANG	69
IMPERIAL PHOENIX	21	TURUL	86
ISPAHAN	20	VENETIAN CLOWNS	76, 77
JEAN BAPTISTE DRESCHER:		VENETIAN COUPLE	78, 79
RICH STILL LIFE WITH FLOWERS	62	VENUS IN HEAVENS	23
JIANGXI	68	WATTEAU SCENE	59
JULIA (JULIA)	94	WINTER LANDSCAPE NEAR HEREND	65

MASTERPIECES

All rights reserved

©2008 Herend Porcelain Manufactory Ltd.

H-8440 Herend Kossuth utca 140. Tel: + 36 88/523-185 Fax: + 36 88/261-518

www.herend.com

info@herend.com

Design: Domé Studio

Printed in Hungary

2008